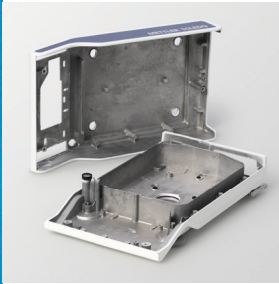


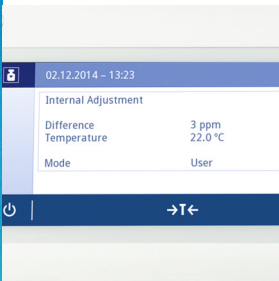
# Trusted Results at Your Fingertips

## Worry-free Weighing, 1 mg



### Metal housing ensures long balance lifetime

The full die-cast aluminum housing not only protects the weighing cell from environmental influences and impacts, it is also resistant to harsh chemicals, including acetone.



### Proven weighing cell delivers reliable results

Our renowned MonoBloc weighing cell, with proFACT automatic internal adjustment, delivers consistently reliable results. Built-in overload protection ensures a long balance lifetime.



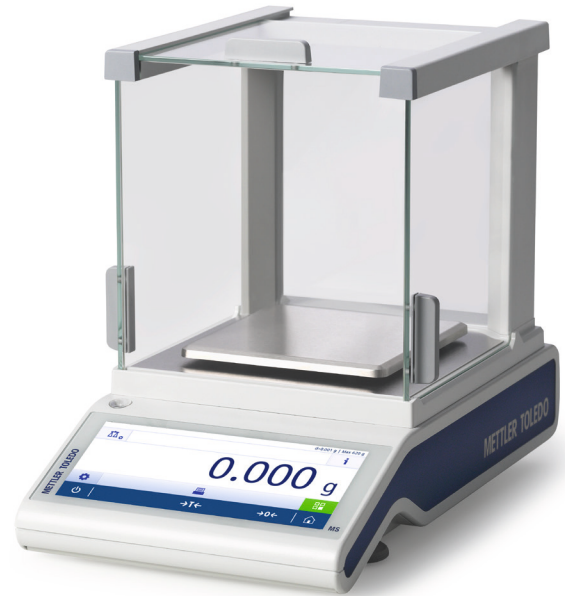
### MinWeigh function assists dosing process

During weighing-in, the weight value remains red until the net sample weight is above the pre-programmed minimum value. It is clear to see when process tolerances have been met.



### Built-in function simplifies balance leveling

The built-in LevelControl function issues a warning when the balance is not level and provides onscreen guidance to help you level the balance correctly within seconds.

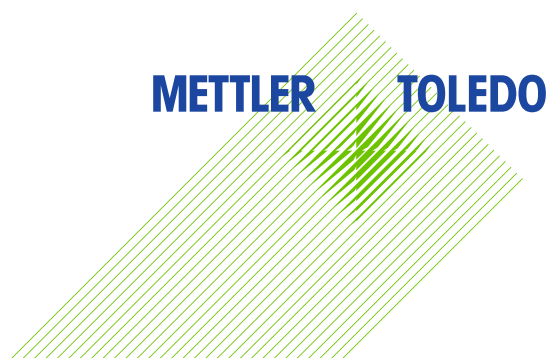


## MS-TS Precision Balances Engineered for Reliable Performance

The robust construction of the MS-TS precision balances makes them perfect for heavier tasks in the laboratory or out on the factory floor. The unique MonoBloc weighing cell delivers the accuracy you need and is fully protected against accidental overload.

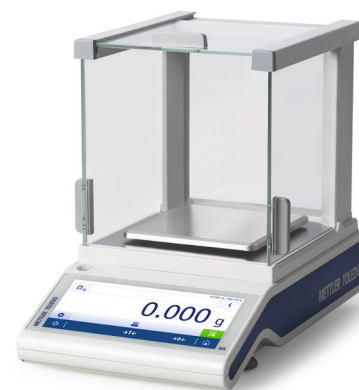
Delivering consistently reliable results, even in harsh environments, these balances will also deliver a fast return on your investment.

The 7" extra-large color TFT touchscreen display is operable through cotton, silicon and rubber gloves. An intuitive user interface and 18mm high digits bring comfort to your daily tasks.



## MS-TS Precision Balances, 1 mg

Technical Specifications	MS303TS	MS403TS	MS603TS	MS1003TS
<b>Limit values</b>				
Maximum capacity	320 g	420 g	620 g	1020 g
Readability	1 mg	1 mg	1 mg	1 mg
Repeatability	1 mg	1 mg	1 mg	1 mg
Linearity deviation	2 mg	2 mg	2 mg	2 mg
<b>Typical values</b>				
Repeatability	0.7 mg	0.7 mg	0.7 mg	0.7 mg
Linearity deviation	0.6 mg	0.6 mg	0.6 mg	0.6 mg
Sensitivity offset (test weight)	3 mg (300 g)	3.5 mg (400 g)	3.5 mg (600 g)	4 mg (1000 g)
USP minimum sample weight (5% load, k=2, U=0.10%)	1.4 g	1.4 g	1.4 g	1.4 g
Minimum sample weight (5% load, k=2, U=1%)	0.14 g	0.14 g	0.14 g	0.14 g
Settling time	1.5 s	1.5 s	1.5 s	1.5 s
<b>Dimensions</b>				
Weighing pan size, WxD (mm)	127 x 127	127 x 127	127 x 127	127 x 127



### Embedded applications

Weighing, statistics for all applications, check weighing, totaling, piece counting, formulation, percent weighing, factor weighing, dynamic weighing, density, dosing and PC Direct (for easy data transfer).

### Features

<b>Accurate Results</b>	<ul style="list-style-type: none"> <li>MonoBloc weighing cell</li> <li>Strong overload protection</li> <li>proFACT internal adjustment</li> <li>MinWeigh warning function</li> <li>Full metal housing</li> </ul>
<b>Efficient Operation</b>	<ul style="list-style-type: none"> <li>7" Extra-large color TFT touchscreen</li> <li>18mm high digits</li> <li>LevelControl function</li> <li>Statistical data analysis</li> <li>Easy cleaning</li> <li>LevelLock</li> <li>QuickLock</li> </ul>
<b>Quality Assurance</b>	<ul style="list-style-type: none"> <li>ISO-Log</li> <li>Sample ID input</li> <li>Passcode protection</li> </ul>
<b>Seamless Process</b>	<ul style="list-style-type: none"> <li>3 interfaces: USB device, USB host, RS232</li> <li>Bluetooth option</li> <li>PC Direct application</li> </ul>

### Accessories

#### P-5x thermal printers



Fast, high quality printouts on paper, self-adhesive labels and continuous self-adhesive paper (including barcodes).

#### Bluetooth adaptors



Wirelessly sends data between the balance and a PC, tablet or printer. No additional software needed.

#### SmartPrep™



Single-use, antistatic funnels enable safe and fast weighing-in of powders. Simply weigh, transfer and rinse.

#### Weights and CarePacs®



For routine testing adjustment of balances, with guaranteed traceability.

For further information on accessories, please visit [www.mt.com/lab-accessories](http://www.mt.com/lab-accessories)

**GWP®**  
Good Weighing Practice™  
[www.mt.com/GWP](http://www.mt.com/GWP)



**Mettler-Toledo AG**  
Laboratory Weighing  
CH-8606 Greifensee, Switzerland  
Tel. +41 44 944 22 11  
Fax +41 44 944 30 60

Subject to technical changes  
© 01/2015 Mettler-Toledo AG  
30247944  
Global MarCom Switzerland

[www.mt.com/ms-precision](http://www.mt.com/ms-precision)

For more information